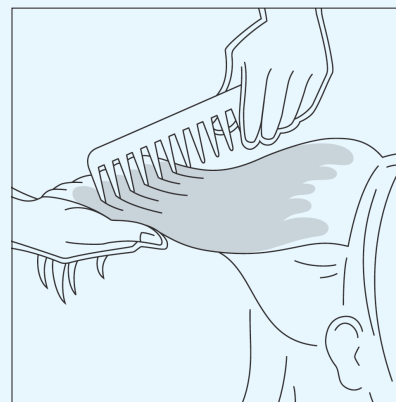
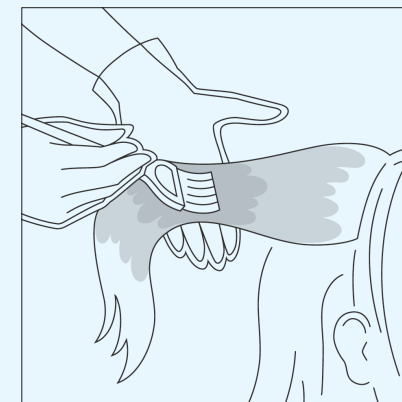


Apply Pre-Pigmentation evenly to dry hair (when using Colorance Acid Color, apply to thoroughly towel-dried hair).



Distribute enough Pre-Pigmentation product to lightly saturate the hair and comb through.
Do not rinse.



Apply sufficient quantity of the selected color formula on top of the Pre-Pigmentation. Distribute evenly and process as usual.

>> PRE-COLOR PREPARATION FOR TOPCHIC & COLORANCE

THE COLOR SUPPORT: PRE-PIGMENTATION

The Pre-Pigmentation Treatment for tint backs and color balancing:

- > Cream color for pre-pigmentation in the directions of Gold, Copper, and Red.
- > Gently replaces color pigments missing from the hair.
- > **Pre-Pigmentation is necessary anytime the target color is more than two levels darker than the existing hair color shade.**
- > Suitable for use with all oxidative hair colors.

Application:

- > Select an appropriate pre-pigmentation shade from the application chart.
- > Using the Colorance applicator bottle, mix **2 parts water to 1 part pre-pigmentation shade.**
- > Apply evenly to dry hair.
- > **Do not rinse.**
- > Continue the color treatment as usual.

SELECT THE TARGET COLOR, AND USE THE PRE-PIGMENTATION SHADE INDICATED IN THE CORRESPONDING BOX:

N/NN	G/GG	GN	GB	B	BG	BN/BK	RB	KN/KB	K	KG	KR	OR	RO	R/RP	PV	RR	RV	V/VR	P/NP	NA	A/AS	MB	BS/SB
10 N	10 G	10 GN	10 GB	10 B	10 BG	10 BN												10 V	10 P		10 A		10 BS
9 N/NN	9 G		9 GB			9 BN				9 KG					9 PV					9 NA	9 A		
8 N/NN	8 G/GG		8 GB	8 B			8 RB	8 KN	8 K	8 KG		8 OR	8 RO	8 RP					8 NP	8 NA	8 A/AS		8 SB
7 N/NN	7 G		7 GB	7 B	7 BG	7 BN	7 RB	7 KB	7 K	7 KG	7 KR	7 OR					7 RR		7 NP	7 NA	7 A	7 MB	7 SB
6 N/NN	6 G		6 GB	6 B	6 BG	6 BK	6 RB		6 K	6 KG	6 KR		6 RO	6 R		6 RR	6 RV	6 VR	6 NP	6 NA	6 A	6 MB	6 SB
5 N/NN			5 GB	5 B	5 BG		5 RB		5 K					5 R			5 RV	5 VR			5 A	5 MB	
4 N/NN	4 G			4 B										4 R				4 V					
3 N																		3 VR					
2 N																						2 A	

Gold Copper Red

GOLDWELL INSPIRING EDUCATION

When you want to add new services to your salon menu or new techniques to your creative repertoire, Goldwell's Education Continuum brings that and more to you with our education events.

Meet the true experts in color-treated-hair—visit one of our North American Academies in: Baltimore, MD / Toronto, ON / Vancouver, BC / Santa Monica, CA or attend a locally sponsored Goldwell event in your area.

ACADEMY REGISTRATION

To Register in the United States: Visit www.goldwell-northamerica.com or call 800.627.3377. To Register in Canada: call 877.670.6767 or 905.670.2844 or speak with a KPSS Sales Consultant. Attend a locally sponsored Goldwell event in your area by speaking with a KPSS Sales Consultant or by calling 800.288.9118. Find your inspiration through Goldwell education.

Core Programs

- Color Primary
- Color Secondary
- ColorFix
- Experience Elumen
- Ultimate Haircare

Creative Color Programs

- Color Enrichment
- Dimensional Color "Scheme" Placement
- "Chromatic" Palette Collections
Reds, Brunettes & Blondes
- Trend Zoom 09
- Signature Sessions

Specialty Color Programs

- Color Succession Phase 1 Laws of Color
- Color Succession Phase 2 Advanced Formulations
- Color Succession Phase 3 Everyday Hair Color Challenges
- Color Connection
- Decoding Decolorization

Goldwell Business Building Programs

- Be More Achieve More Customized In-Salon Program:
 - Consultation
 - Communication
 - Goal Setting
 - Maximize Results
 - Choose to Win
 - Home Hair Care
- Live the Color Cycle
- New Generation
- Passion Wins
- Make It Happen
- Salon Branding

For technical information, call (800) 333-CHIC in the USA and Canada (888) 246-3670 in Quebec, and (01152) 818-356-3020 in Mexico.

www.goldwell-northamerica.com

GOLDWELL

CLOSER TO STYLISTS. CLOSER TO HAIR.