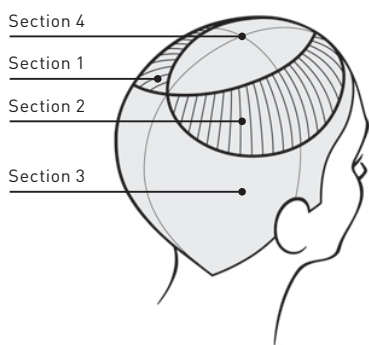
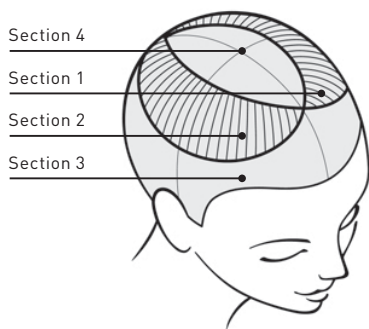
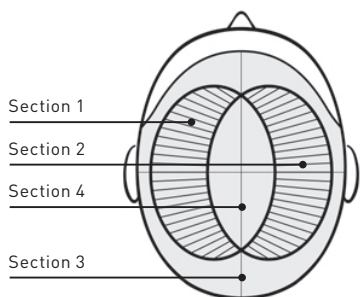




GOLDWELL

CLOSER TO STYLISTS. CLOSER TO HAIR.





WARM EMBRACE

Natural Base Shade: 6N (virgin hair)



COLOR FORMULAS:

(adapt amount according to need)

- a) 40 ml 9% (30 vol.) Topchic Lotion + 40 ml 8R0 Topchic Hair Color
- b) 40 ml 6% (20 vol.) Topchic Lotion + 40 ml 6R0 Topchic Hair Color

STEP 1: Sectioning

Sections 1 + 2: Create a large crescent shape on each side of the head with each front point starting approximately 4 cms back from the forehead and the back points extending approximately 4 cms below the crown, at the center back.

Section 3: The hair below the crescents forms section 3.

Section 4: The hair between the two crescents forms section 4 on the top of the head.

STEP 2: Application

Remember: Use virgin application throughout for first time color when lightening. Apply System Pre-Color Spray to porous areas.

Section 3: Apply formula a) 8R0 starting from the back working forward to the front on both sides.

Section 1: Starting at the center back point, slice and apply back to back foils using formula a) 8R0 and b) 6R0 as per the diffusion slicing pattern below.

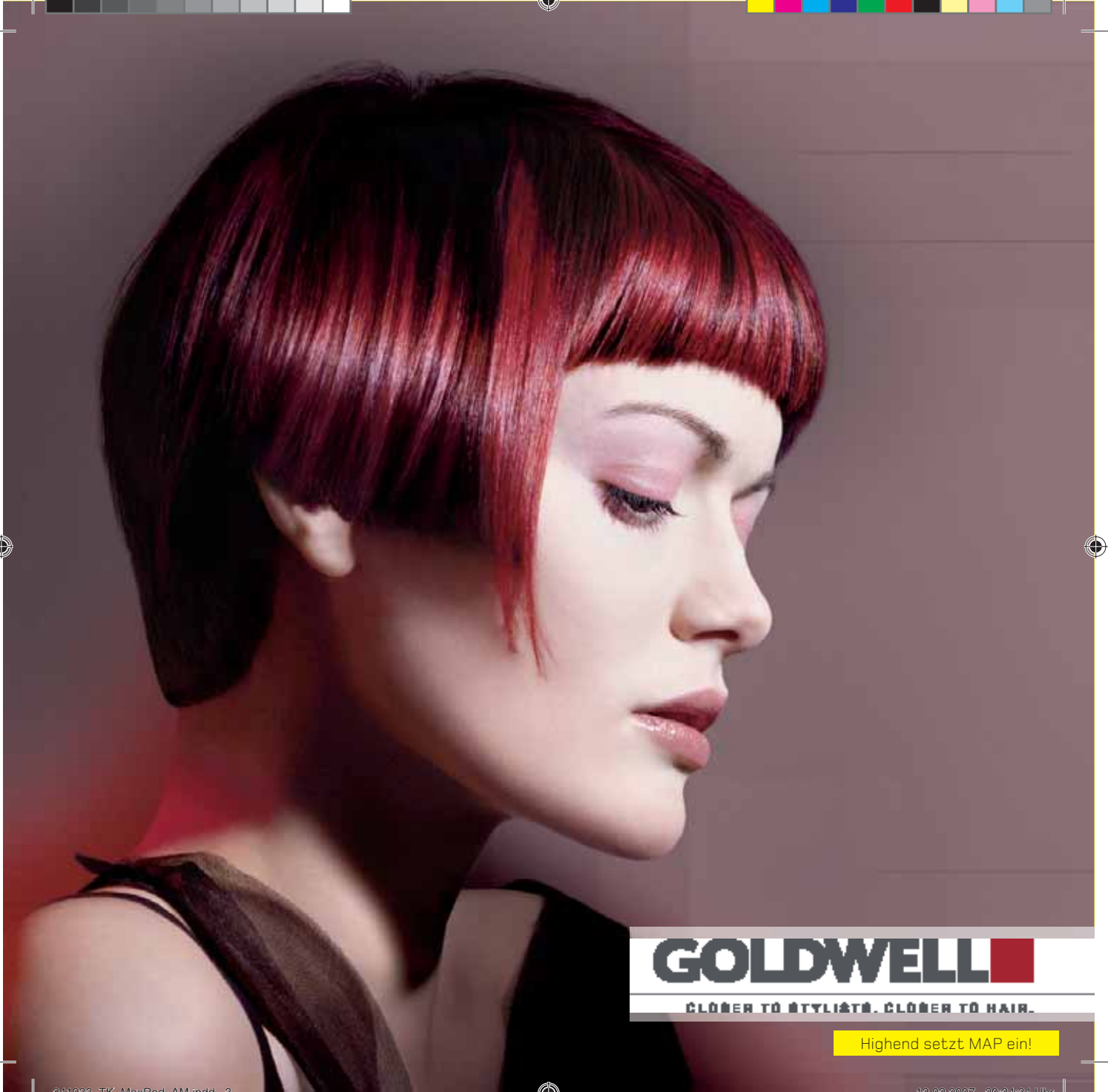
Scalp	b	b	b	b	b	b
Mid-lengths						
Ends	a	a		a	a	b

Section 2: Repeat as per section 1.

Section 4: Apply formula a) 8R0 throughout and secure within foil.

STEP 3: Processing Time + Care

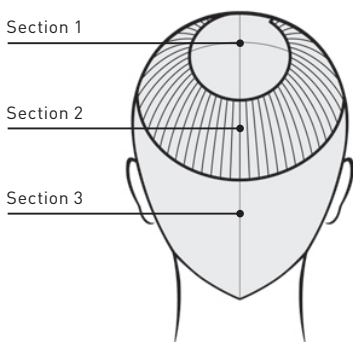
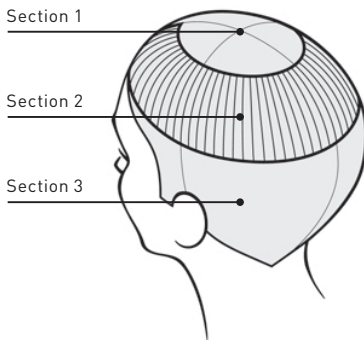
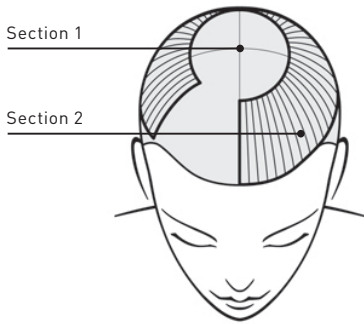
1. 30 minutes (or 15–20 minutes with heat accelerator).
2. Shampoo, rinse and condition with appropriate GOLDWELL products.
3. Recommend suitable home care products from the GOLDWELL Color Care range.



GOLDWELL

CLOSER TO STYLISTS. CLOSER TO HAIR.

Highend setzt MAP ein!



COOL PASSION

Natural Base Shade: 5N (virgin hair)



COLOR FORMULAS:

(adapt amount according to need)

- a) 40 ml 6% (20 vol.) Topchic Lotion + 40 ml 5RV Topchic Hair Color
- b) 20 ml 6% (20 vol.) Topchic Lotion + 20 ml 6RV Topchic Hair Color
- c) 20 ml 9% (30 vol.) Topchic Lotion + 15 ml 7RR + 5 ml RR-Mix Topchic Hair Color

STEP 1: Sectioning

Section 1: Place a small circle of about 6–8 cms on the top surrounding the crowns.

Section 2: Starting back from the front hairline in the recession area on one side and ending asymmetrically at the front on the other, create a large horseshoe-shaped section sitting under section 1.

Section 3: The rest of the hair becomes section 3.

STEP 2: Application

Apply System Pre-Color Spray to porous areas and System Color Remover Skin to clean-up throughout the application if required.

Section 3: Starting in the back working toward the front, apply formula **a) 5RV**, scalp to ends.

Section 2: Using back to back vertical slices, start back from the hairline and alternate the following diffusion pattern starting with formula **b) 6RV**, followed by formula **c) 7RR + RR-Mix**.

Scalp	b	b	b	b
Mid-lengths	c	c	c	c
Ends	c	c	c	c

Section 1: Apply scalp to ends throughout using formula **a) 5RV**.

STEP 3: Processing Time + Care

1. 30 minutes (or 15–20 minutes with heat accelerator).
2. Shampoo, rinse and condition with appropriate GOLDWELL products.
3. Recommend suitable home care products from the GOLDWELL Color Care range.